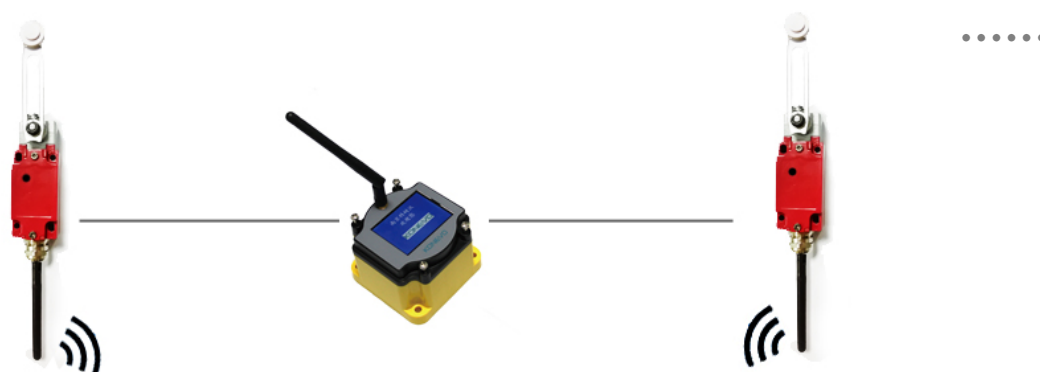


Limit switches

Safe、Steady、Accurate



Safety comes from Technology, Professionalism and Responsibility

Model	Products Name	Page
KA – 3	Vertical Limit Switch	1–2
KH – 4	Sealed Waterproof Limit Switch	3–4
KB – 5	Medium Vertical Limit Switch	5–6
KE – 8	Small Horizontal Limit Switch	7–8
KC – 8	Small Vertical Limit Switch	9–10
KJT–XWK	High Temperature Limit Switch	11–12
KJT1	Heavy Loading Limit Switch	13–14
XCRA、XCKMR	Limit Switch	15
DQX-GL	Limit Switch	16
	Wireless Limit Switch	17

■ Features

- ★ Double circuit limit switch, widely used.
- ★ Solid structure made of Zinc alloy and reinforced plastics.
- ★ Small size, Waterproof, Oil proof.
- ★ The internal micro switch has double reed structure design, with long mechanical life
- ★ Large OT action.
- ★ Easy conduit design.
- ★ Various types of actuators are convenient to use.

■ Specification

★ Rated Value

Nominal Voltage (V)	Non-Inductive Load (A)				Inductive Load (A)			
	Resistive Load		Light Bulb Load		Inductive Load		Motor Load	
	NC	NO	NC	NO	NC	NO	NC	NO
125VAC	5		1.5	0.7	3		2	1
250VAC	5		1	0.5	3		1.5	0.8
8VDC	5		3		5	4	3	
14VDC	5		3		4	4	3	
30VDC	5		3		4	4	3	
125VDC	0.4							
250VDC	0.2							
Inrush Current	N.C.:<24A N.O.:<12A							

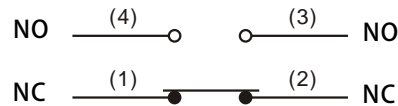
Attn.

- 1、Power factor of inductive load is above 0.4 (AC). The time constant is below 7msec (DC).
- 2、The inrush current of bulb load is 10 times that of steady state current, and the inrush current of motor load is 6 times that of steady state current.

■ Operating Characteristic

Model	KA-3205 KA-3208 KA-3209	KA-3212	KA-3213 KA-3214	KA-3267 KA-3268	KA-3270	KA-3289
OF Max	750g	750g	900g	150g	150g	550g
RF Min	100g	200g	200g	30g	30g	100g
PT Max	20°	1.8mm	1.8mm	30mm	30mm	20°
OT Min	75°	4mm	4mm	22.5°	22.5°	75°
MD Max	10°	1.2mm	1.2mm	14°	14°	14°
OP	—	30±0.8mm	40±0.8mm	—	—	—

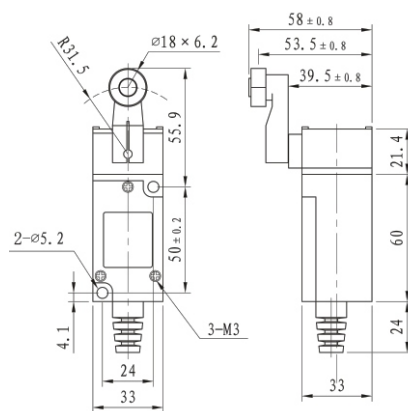
■ Contact Type



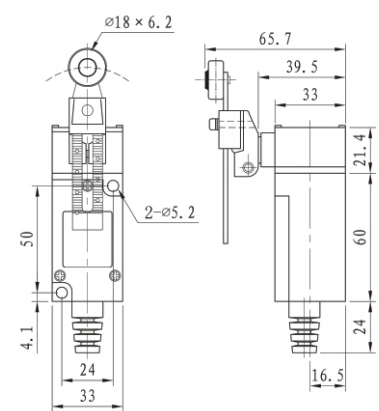
■ Parameters

Current	10A 250VAC
Operating speed	5mm~50cm/s
Operating Frequency	Machinery: 120times/minute Electric: 30times/minute
Contact Resistance	25mΩ (mm) (initial stage)
Insulation Resistance	>100Ohm (<500VDC)
Withstand Voltage	No connection between terminals. 1000VAC50/60Hz lasts 1 minute Between the terminal and the contact. 1500VAC50/60Hz lasts 1 minute Between terminal and no-load current metal. 1500VAC50/60Hz lasts 1 minute
Vibration	Misoperation Endurance 10~55Hz, 1.5mm double-amplitude
Impact	Mechanical Endurance >1,000m/S ² (>100G) Misoperation Endurance >300m/S ² (>30G)
Temperature	-25° C~+65° C
Humidity	<95%RH
Working Life	Machinery: >1million times Electric: >0.5million times
Protection Degree	IEC specification: IP65
Weight	130g-190g

KA-3205

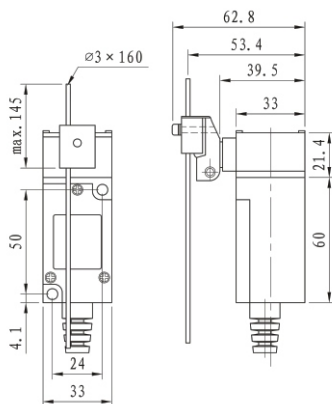


KA-3209

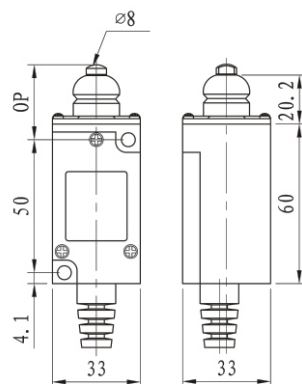


Appearance and Size

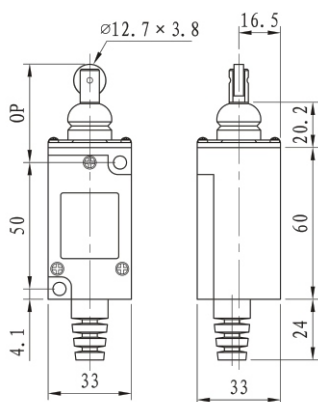
KA-3208



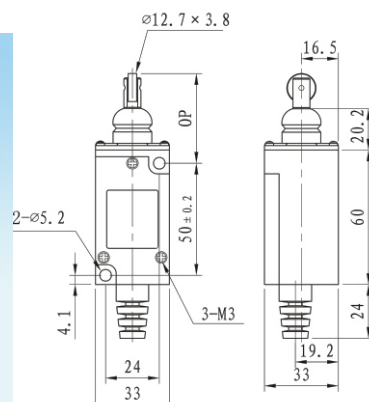
KA-3212



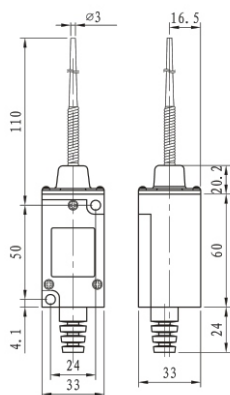
KA-3213



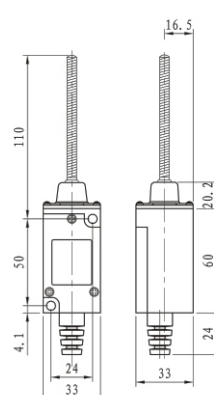
KA-3214



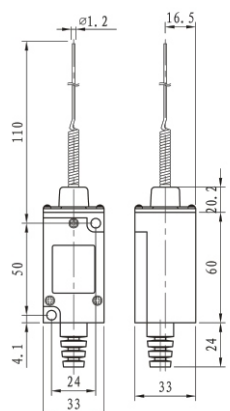
KA-3267



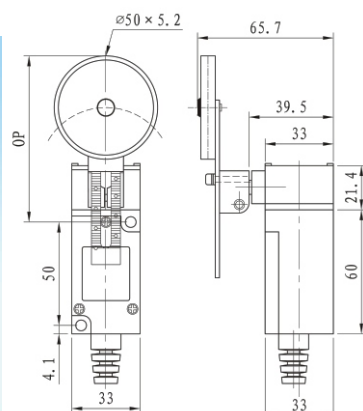
KA-3268



KA-3270



KA-3289



■ Features

- ★ Double circuit limit switch, widely used. , fully sealed structure design.
- ★ High mechanical strength, Longer mechanical life.
- ★ IP67 high grade protection with oil - resistant,
- ★ Waterproof and dustproof construction

■ Specification

★ Rated Value

Nominal Voltage (V)	Non-Inductive Load (A)				Inductive Load (A)			
	Resistive Load		Light Bulb Load		Inductive Load		Motor Load	
	NC	NO	NC	NO	NC	NO	NC	NO
125VAC	5(0.1)	1.5	0.7	3	2.5	1.3		
250VAC	3	1	0.5	2	1.5	0.8		
8VDC	5(0.1)	2	5	4	3			
14VDC	5(0.1)	2	4	4	3			
30VDC	4(0.1)	2	3	3	3			
125VDC	0.4	0.05	0.4	0.05				
250VDC	0.2	0.03	0.2	0.03				

■ Parameters

Rated Current	5A 125VAC,3A 250VAC		
Operating speed	1mm~1m/s		
Operating Frequency	Machinery:	120times/minute	
	Electric:	30times/minute	
Contact Resistance	<15 Ohm Initial stage		
Insulation Resistance	>100Ohm (<500VDC)		
Withstand Voltage	No connection between terminals.		1000VAC50/60Hz lasts 1 minute
	Between the terminal and the contact.		1500VAC50/60Hz lasts 1 minute
	Between terminal and no-load current metal.		1500VAC50/60Hz lasts 1 minute
Vibration	Misoperation endurance 10~55Hz,1.5mm double-amplitude		
Impact	Mechanical Endurance	>1000m/S ²	(>100G)
	Misoperation Endurance	>500m/S ²	(>50G)
Temperature	-25 ° C~+70 ° C		
Humidity	<95%RH		
Working Life	Machinery:	>1million times	
	Electric:	>0.5million times	
Protection Degree	IEC Specification: IP65		
Weight	360g (Cable3m)		
	540g (Cable5m)		

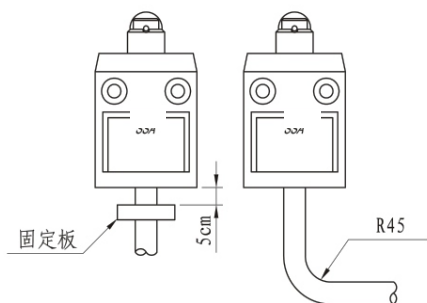
■ Operating Characteristic

Model	KH-4103	KH-4204	KH-4205	KH-4209
OF Max	1,200gf(11.77N)	1,200gf(11.77N)	580gf(5.69N)	580gf(5.69N)
RF Min	450gf(4.41N)	450gf(4.41N)	150gf(1.47N)	150gf(1.47N)
PT Max	1.8mm	1.8mm	25 °	25 °
OT Min	3mm	3mm	40 °	40 °
MD Max	0.2mm	0.2mm	3 °	3 °
OP	28.5 ± 1mm	28.5 ± 1mm	-	-

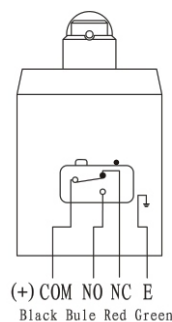
Model	KH-4212	KH-4213	KH-4214	KH-4270
OF Max	1,800gf(17.65N)	1,800gf(17.65N)	1,800gf(17.65N)	150gf(1.47N)
RF Min	450gf(4.41N)	450gf(4.41N)	450gf(4.41N)	-
PT Max	1.8mm	1.8mm	1.8mm	15 °
OT Min	3mm	3mm	3mm	-
MD Max	0.2mm	0.2mm	0.2mm	-
OP	24.9 ± 1mm	34.3 ± 1mm	34.3 ± 1mm	-

■ Wiring Considerations

Wiring shall be installed 5cm away from the switch, and the bending radius of the wire shall not be less than R45mm. The insulation of the wire shall not be damaged to avoid any power leakage.

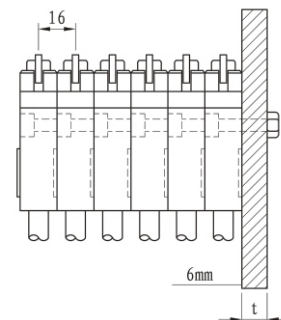


■ Contact Type



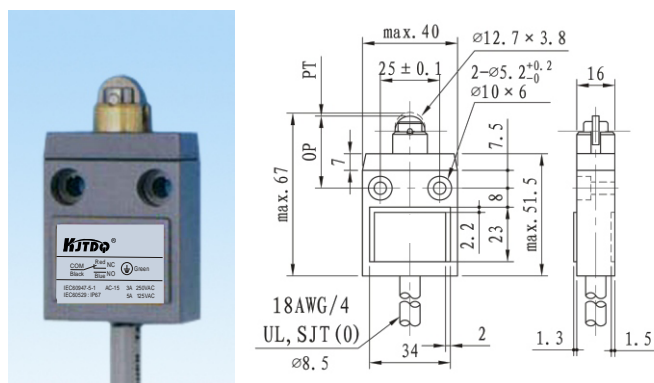
■ Where multiple connections are used

When it is necessary to connect multiple switches for group use, up to 6 switches can be connected. When connected, grooves on the switch surface shall cooperate with each other, and the size of plate thickness shall be more than 6mm.

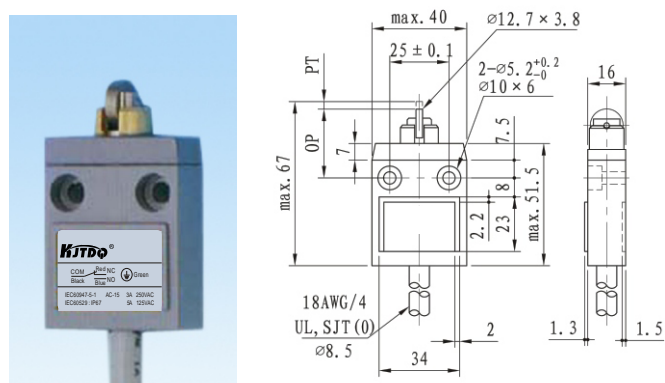


■ Appearance and Size

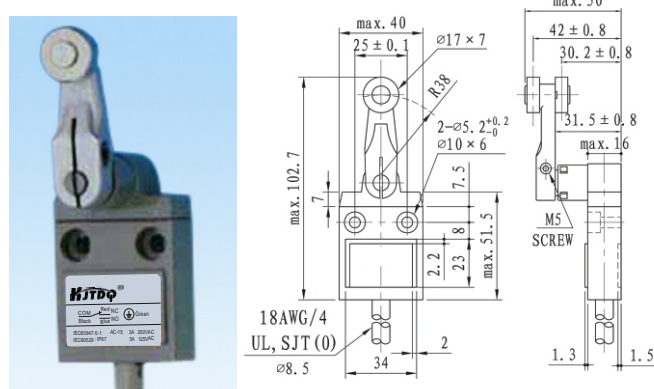
► **KH-4203**



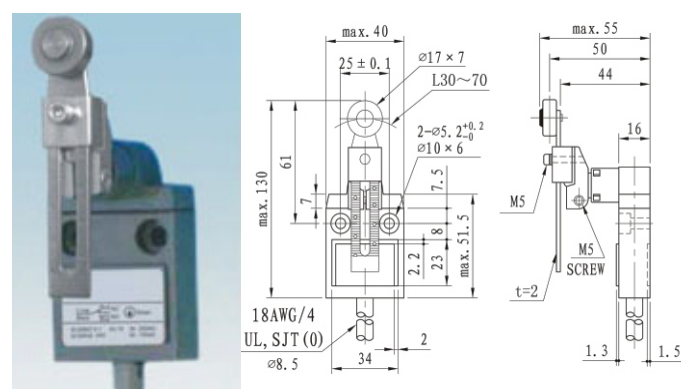
► **KH-4204**



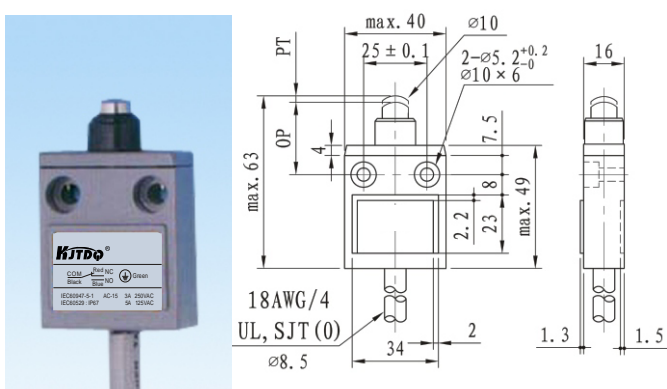
► **KH-4205**



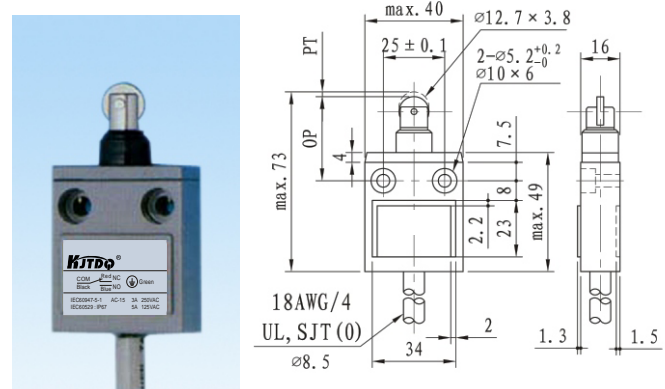
► **KH-4209**



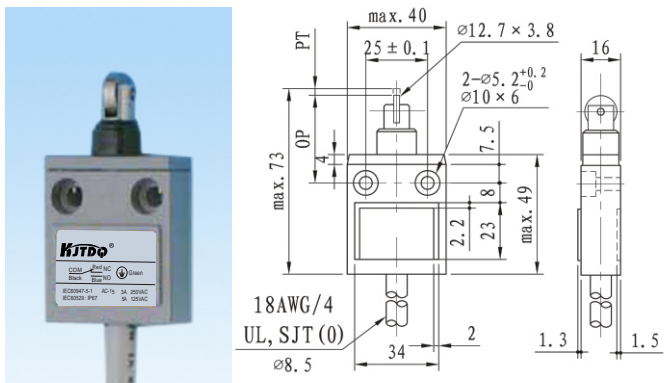
► **KH-4212**



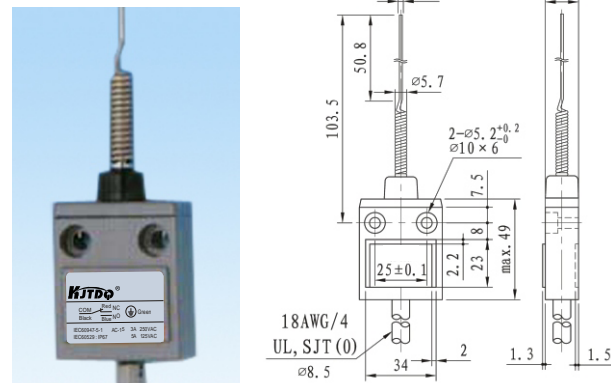
► **KH-4213**



► **KH-4214**



► **KH-4270**



■ Features

- ★ Double circuit limit switch, widely used.
- ★ Solid integral cast aluminum alloy housing.
- ★ IP65 protection grade, waterproof and oil proof
- ★ The internal micro switch has double reed structure design, with long mechanical life.
- ★ Various types of actuators are convenient to use.

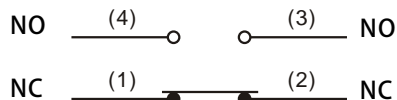
■ Specifications

★ Rated Value

Nominal Voltage (V)	Non-Inductive Load (A)				Inductive Load (A)			
	Resistive Load		Light Bulb Load		Inductive Load		Motor Load	
	NC	NO	NC	NO	NC	NO	NC	NO
125VAC	10	3	1.5	10	5	2		
250VAC	5	2	1	5	3	1.0		
480VAC	3	1.5	0.8	3	1.5	0.8		
600VAC	1	1	0.5	1.5	1	0.5		
8VDC	10	6	3	10	6			
14VDC	10	6	3	10	6			
30VDC	6	4	3	6	4			
125VDC	0.8	0.2	0.2	0.8	0.2			
250VDC	0.4	0.1	0.1	0.4	0.1			

- Attn. 1、Power factor of inductive load is above 0.4 (AC). The time constant is below 7msec (DC).
 2、The inrush current of bulb load is 10 times that of steady state current, and the inrush current of motor load is 6 times that of steady state current.

■ Contact Type



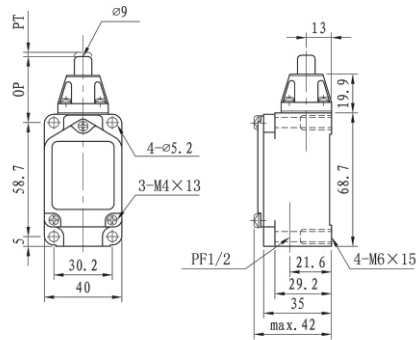
■ Parameters

Rated Current	10A / 250VAC
Operating speed	1mm ~ 2m/s
Operating Frequency	Machinery: 120times/minute Electric: 30times/minute
Contact Resistance	<15Ω Ohm Initial stage
Insulation Resistance	>100Ω Ohm (<500VDC)
Withstand Voltage	No connection between terminals. 1000VAC50/60Hz lasts 1 minute Between the terminal and the contact. 2200VAC50/60Hz lasts 1 minute Between terminal and no-load current metal. 2200VAC50/60Hz lasts 1 minute
Vibration	Misoperation Endurance 10~55Hz, 1.5mm double-amplitude
Impact	Mechanical Endurance: >1,000m/S ² (>100G) Misoperation Endurance: >300m/S ² (>30G)
Temperature	-25℃ ~ +80℃
Humidity	<95%RH
Working Life	Machinery: >15million times Electric: >0.5million times
Protection Degree	IEC Specifications: IP66
Weight	258 g

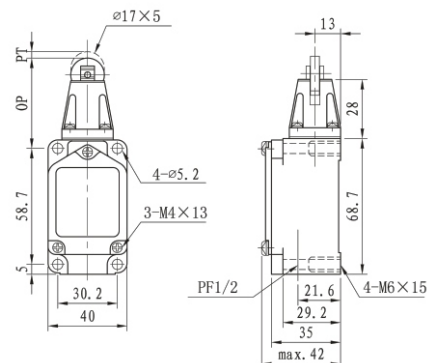
■ Operating Characteristic

Model	KB-5101	KB-5102 KB-5103	KB-5104	KB-5105	KB-5107	KB-5108	KB-5109	KB-5106 KB-5166 KB-5168 KB-5169
OF Max	2720g	2720g	1000g	1200g	142g	1360g	2720g	150g
RF Min	910g	910g	227g	—	28g	227g	910g	—
PT Max	1.7mm	1.7mm	20°	227g	20°	20°	1.7mm	28mm
OT Min	6.4mm	5.6mm	70°	55°	70°	70°	4mm	—
MD Max	1mm	1mm	10°	35°	10°	10°	1mm	—
OP	34±0.8mm	44.8±0.8mm	—	90±10°	—	—	44.5±0.8mm	—

KB-5101

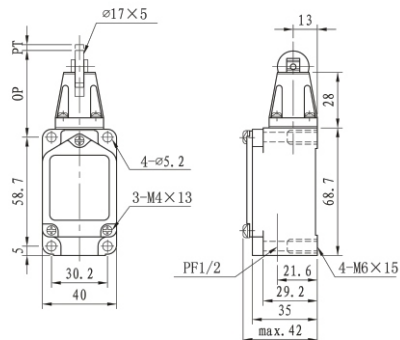


KB-5102

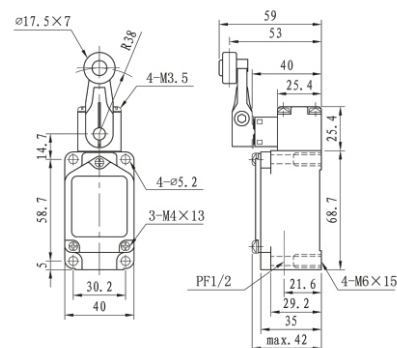


■ Appearance and Size

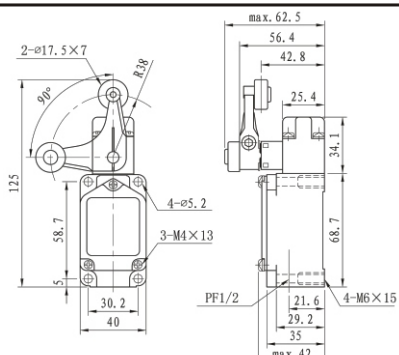
► **KB-5103**



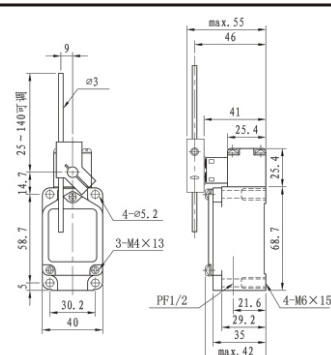
► **KB-5104**



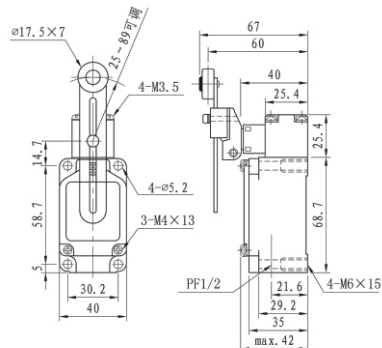
► **KB-5105**



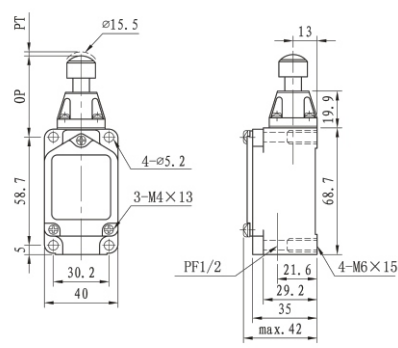
► **KB-5107**



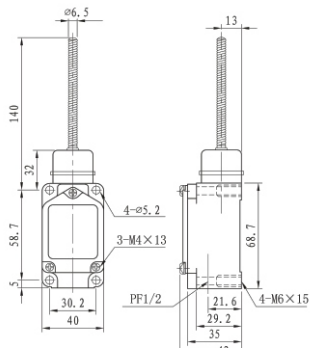
► **KB-5108**



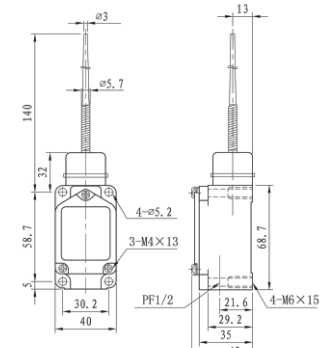
► **KB-5109**



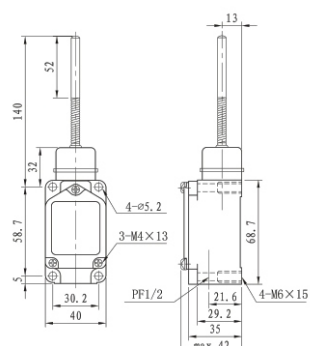
► **KB-5106**



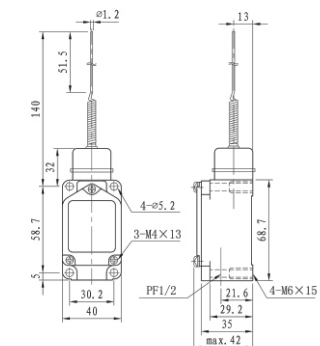
► **KB-5166**



► **KB-5168**



► **KB-5169**



■ Features

- ★ Use of left, right and bottom three directions incoming wire design, convenient and practical.
- ★ Strong Plastic Coating, small size, Waterproof, Oil-proof.
- ★ Easy conduit design for wiring.
- ★ Plastic terminal fixed with resin.

■ Specifications

★ Rated Value

Nominal Voltage	Non-Inductive Load (A)				Inductive Load (A)			
	Resistive Load		Light Bulb Load		Inductive Load		Motor Load	
	NC	NO	NC	NO	NC	NO	NC	NO
125VAC	10	3	1.5	10	5	2.5		
250VAC	10	2.5	1.25	10	3	1.5		
480VAC	3	1.5	0.75	2.5	1.5	0.75		
	10	3	1.5	6	5	2.5		
	10		1.5	6	5	2.5		
	6	3	1.5	5	5	2.5		
	0.5	0.4	0.4	0.05	0.05	0.05		
	0.25		0.2	0.03	0.03	0.03		
Inrush Current	N.C.:<30A N.O.:<15A							

Attn.

1. Power factor of inductive load is above 0.4 (AC). The time constant is below 7msec (DC).
2. The inrush current of bulb load is 10 times that of steady state current, and the inrush current of motor load is 6 times that of steady state current.

■ Operating Characteristic

Model	KE-8420	KE-8421 KE-8422	KE-8250	KE-8230	KE-8231	KE-8251	KE-8254
OF Max	600g	600g	260g	170g	200g	300g	300g
RF Min	100g	100g	35g	25g	40g	40g	40g
PT Max	1.6mm	1.6mm	-	-	-	-	-
OT Min	5mm	5mm	2.5mm	4mm	5mm	2mm	2mm
MD Max	0.2mm	0.2mm	1.7mm	3mm	3mm	1.5mm	1.5mm
OP	21.8±1.2mm	33.4±1.2mm	25±1mm	25±1mm	40±1mm	40±1mm	50±1mm
FP	-	-	33mm	36mm	51mm	47mm	57.2mm

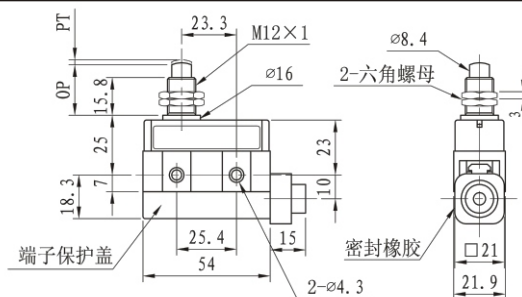
■ Contact Type



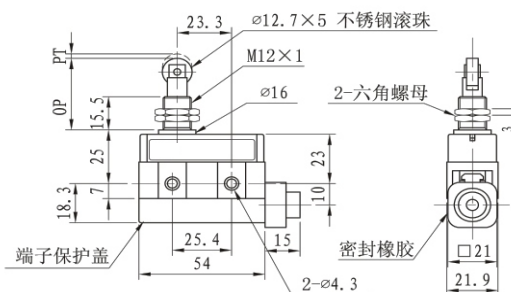
■ Parameters

Rated Current	10A/ 250VAC
Operating speed	0.05mm~0.5m/s
Operating Frequency	Machinery: 120times/minute Electric: 30times/minute
Contact Resistance	<15 Ω Ohm Initial stage
Insulation Resistance	>100 Ω Ohm (<500VDC)
Withstand Voltage	No connection between terminals. 1000VAC50/60Hz lasts 1 minute Between the terminal and the contact. 1500VAC50/60Hz lasts 1 minute Between terminal and no-load current metal. 1500VAC50/60Hz lasts 1 minute
Vibration	Misoperation Endurance 10~55Hz, 1.5mm double-amplitude
Impact	Mechanical Endurance: >1,000m/S ² (>100G) Misoperation Endurance: >300m/S ² (>30G)
Temperature	-10℃ ~ +80℃
Humidity	<95%RH
Working Life	Machinery: >1.0million times Electric: >0.5million times
Protection Degree	IEC Specifications: IP65
Weight	90g

▶ KE-8420

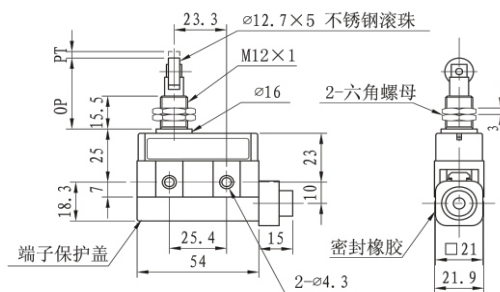


▶ KE-8421

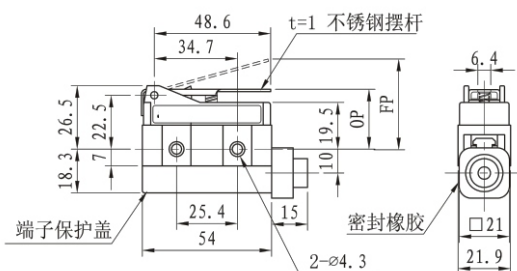


Appearance and Size

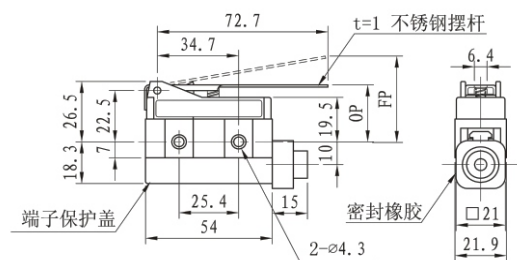
► KE-8422



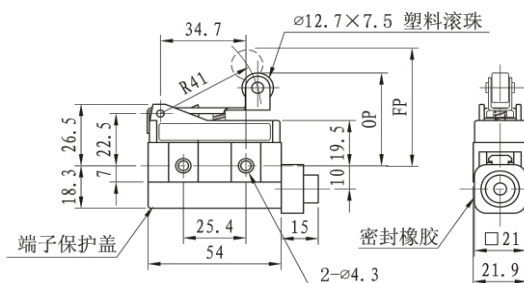
► KE-8230



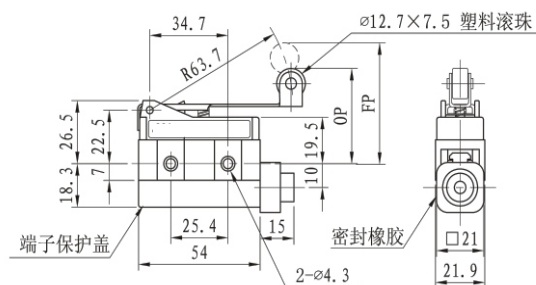
► KE-8250



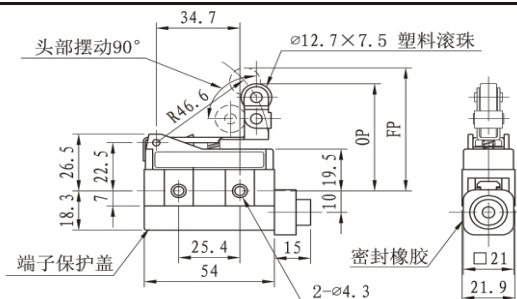
► KE-8251



► KE-8231



► KE-8254



Features

- ★ Double circuit limit switch, widely used.
- ★ Solid structure made of Zinc alloy and reinforced plastics.
- ★ Small size, Waterproof, Oil proof.
- ★ The internal micro switch has double reed structure design, with long mechanical life.
- ★ Large OT action.
- ★ Easy conduit design.
- ★ Various types of actuators are convenient to use.

Specification

★ Rated Value

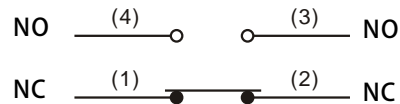
Nominal Voltage (V)	Non-Inductive Load (A)				Inductive Load (A)			
	Resistive Load		Light Bulb Load		Inductive Load		Motor Load	
	NC	NO	NC	NO	NC	NO	NC	NO
125VAC	5		1.5	0.7	3		2	1
250VAC	5		1	0.5	3		1.5	0.8
8VDC	5		3		5	4	3	
14VDC	5		3		4	4	3	
30VDC	5		3		4	4	3	
125VDC	0.4							
250VDC	0.2							
Inrush Current	N.C.: <24A N.O.: <12A							

- Attn.
1. Power factor of inductive load is above 0.4 (AC). The time constant is below 7msec (DC).
 2. The inrush current of bulb load is 10 times that of steady state current, and the inrush current of motor load is 6 times that of steady state current.

Operating Characteristic

Model	KC-8104	KC-8108	KC-8107	KC-8111	KC-8112 KC-8122	KC-8166 KC-8167 KC-8168 KC-8169
OF Max	750g	750g	750g	900g	900g	150
RF Min	100g	100g	100g	150g	150g	—
PT Max	20°	20°	20°	1.5mm	1.5mm	30mm
OT Min	50°	50°	50°	4mm	4mm	—
MD Max	12°	12°	12°	1mm	1mm	—
OP	—	—	—	26±0.8mm	37±0.8mm	—

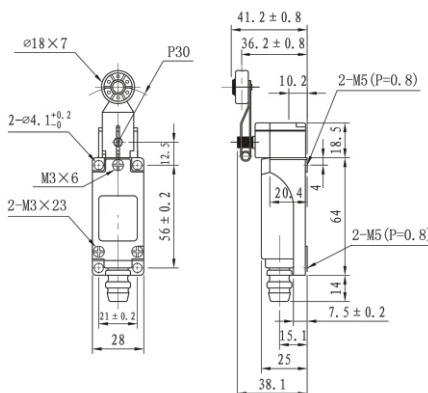
Contact Type



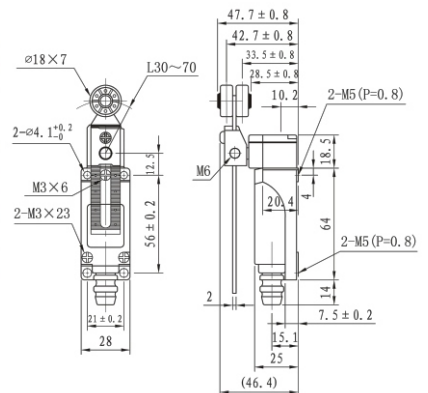
Parameters

Rated Current	5A 250VAC	
Operating speed	0.5mm~50cm/s	
Operating Frequency	Machinery:	120times/minute
	Electric:	30times/minute
Contact Resistance	<25Ω Ohm Initial stage	
Insulation Resistance	>100Ω Ohm (<500VDC)	
Withstand Voltage	No connection between terminals. 1000VAC50/60Hz lasts 1 minute	
	Between the terminal and the contact. 1500VAC50/60Hz lasts 1 minute	
	Between terminal and no-load current metal. 1500VAC50/60Hz lasts 1 minute	
Vibration	Misoperation Endurance	10~55Hz, 1.5mm double-amplitude
Impact	Mechanical Endurance:	>1,000m/S² (>100G)
	Misoperation Endurance:	>500m/S² (>50G)
Temperature	-15℃ ~ +65℃	
Humidity	<95%RH	
Working Life	Machinery:	>10million times
	Electric:	>0.5million times
Protection Degree	IEC Specifications: IP65	
Weight	130g~190g	

KC-8104

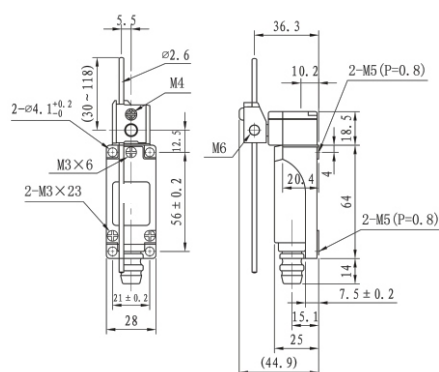


KC-8108

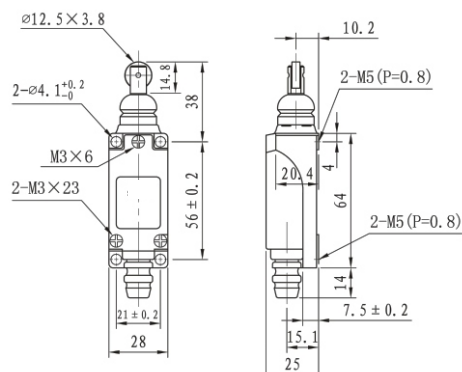


■ Appearance and Size

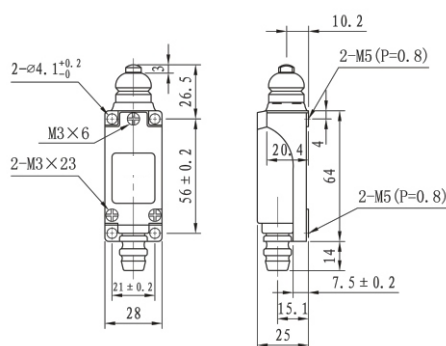
► **KC-8107**



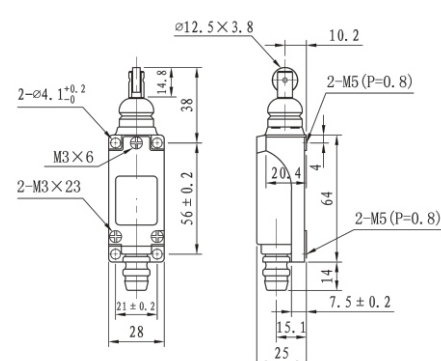
► **KC-8112**



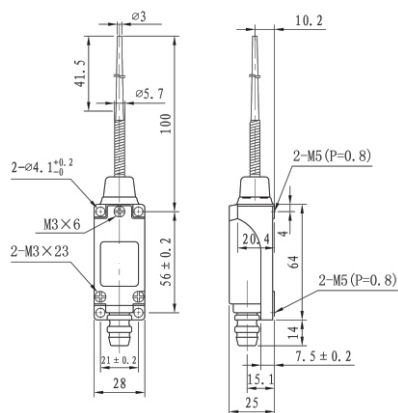
► **KC-8111**



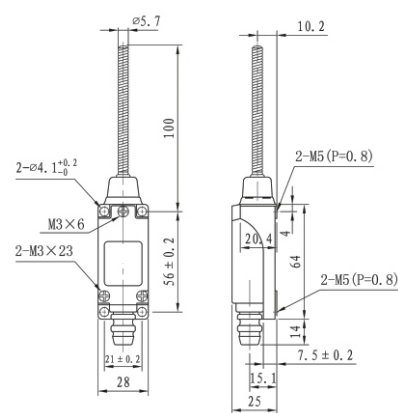
► **KC-8122**



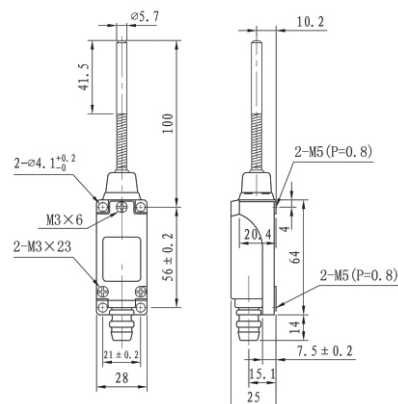
► **KC-8166**



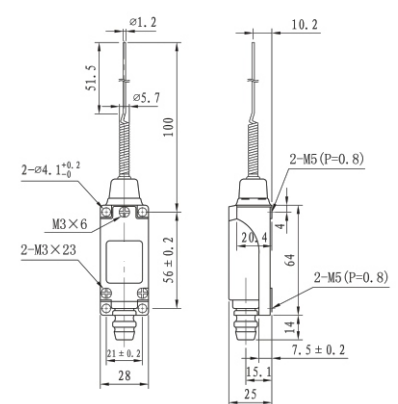
► **KC-8167**



► **KC-8168**



► **KC-8169**



Features

- ★ Over position alarm, Safe and Reliable, contact detection, small design.
- ★ High Temperature Resistance up to 350 °C.
- ★ Outer housing: Aluminum alloy with high mechanical strength.
- ★ Protection degree IP67 Oil resistant, Water resistant and Pressure resistant structure.

Specification

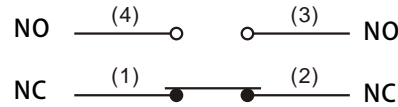
★ Rated value

Nominal Voltage (V)	Non-Inductive Load (A)				Inductive Load (A)			
	Resistive Load		Light Bulb Load		Inductive Load		Motor Load	
	NC	NO	NC	NO	NC	NO	NC	NO
125VAC	10	3	1.5	10	5	2		
250VAC	5	2	1	5	3	1.0		
480VAC	3	1.5	0.8	3	1.5	0.8		
600VAC	1	1	0.5	1.5	1	0.5		
8VDC	10	6	3	10	6			
14VDC	10	6	3	10	6			
30VDC	6	4	3	6	4			
125VDC	0.8	0.2	0.2	0.8	0.2			
250VDC	0.4	0.1	0.1	0.4	0.1			

Attn.

1. Power factor of inductive load is above 0.4 (AC). The time constant is below 7msec (DC).
2. The inrush current of bulb load is 10 times that of steady state current, and the inrush current of motor load is 6 times that of steady state current.

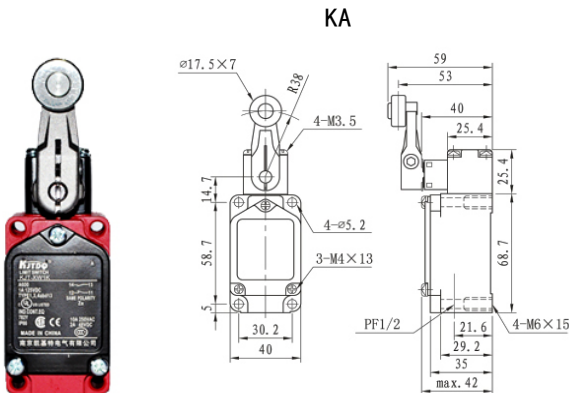
Contact Type



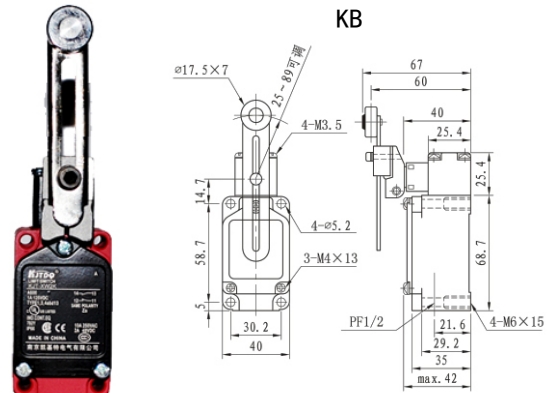
Parameters

Rated Current	10A /250VAC	
Operating speed	1mm~2m/s	
Operating Frequency	Machinery: 120times/minute	Electric: 30times/minute
Contact Resistance	<15 Ω Ohm Initial stage	
Insulation Resistance	>100 Ω Ohm (<500VDC)	
Withstand Voltage	No connection between terminals. 1000VAC50/60Hz lasts 1 minute Between the terminal and the contact. 2200VAC50/60Hz lasts 1 minute Between terminal and no-load current metal. 2200VAC50/60Hz lasts 1 minute	
Vibration	Misoperation Endurance	10~55Hz, 1.5mm double-amplitude
Impact	Mechanical Endurance:	>1,000m/S ² (>100G)
	Misoperation Endurance:	>300m/S ² (>30G)
Temperature	-40 C ~ +350 C	
Humidity	<95% RH	
Working Life	Machinery:	>15million times
	Electric:	>0.5million times
Protection Degree	IEC Specifications: IP66	
Weight	258 g	

KJT-XWKA

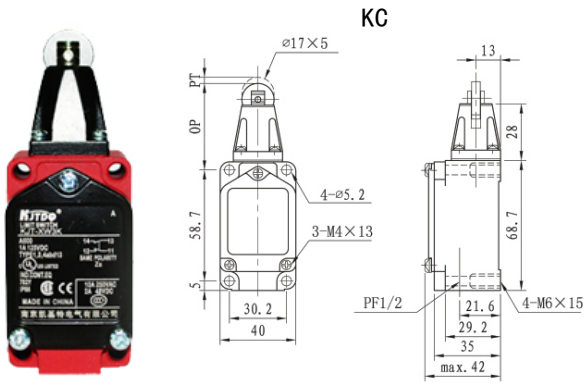


KJT-XWKB

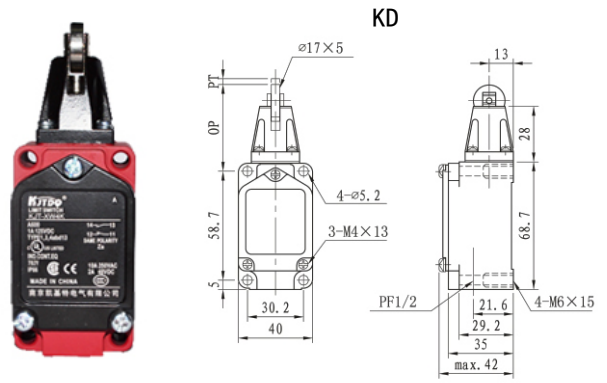


■ Appearance and Size

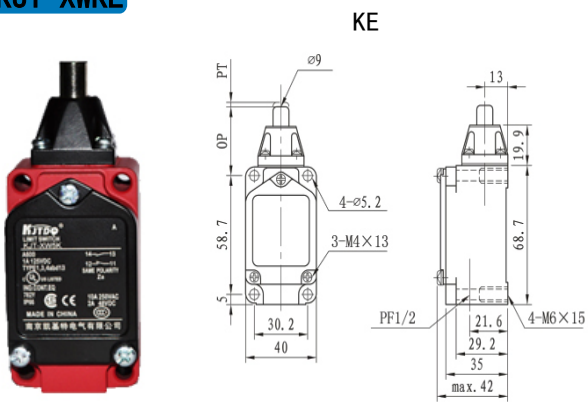
▶ KJT-XWKC



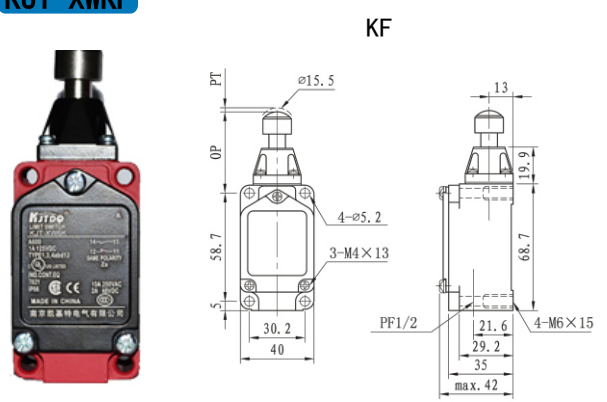
▶ KJT-XWKD



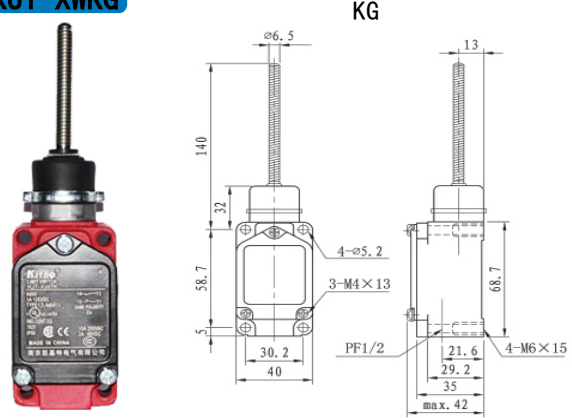
▶ KJT-XWKE



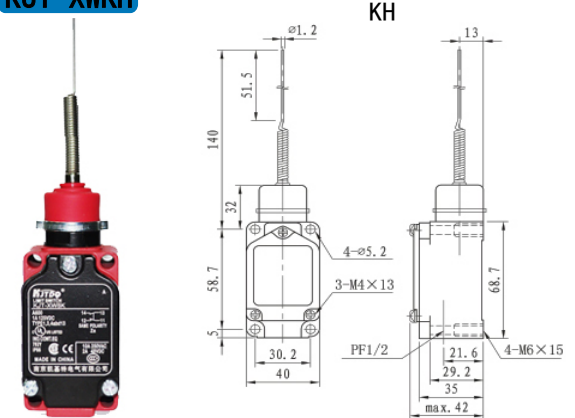
▶ KJT-XWKF



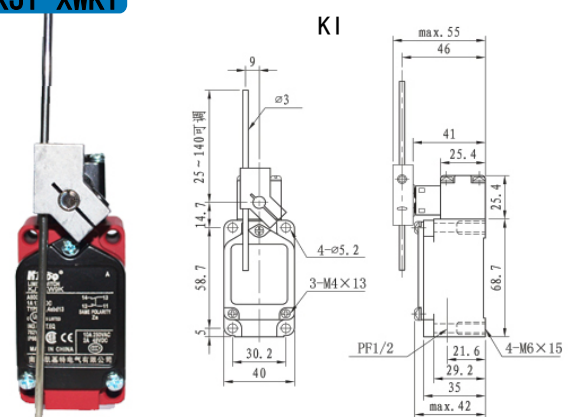
▶ KJT-XWKG



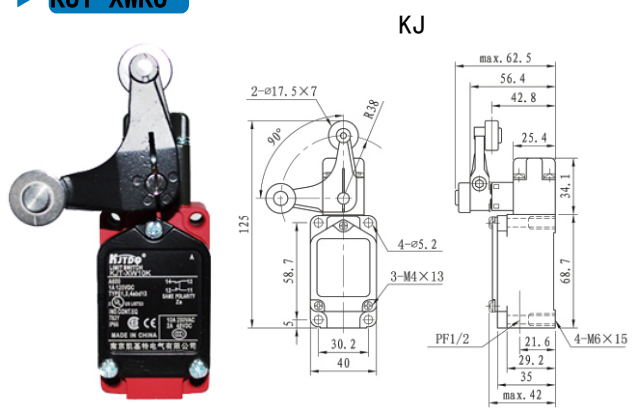
▶ KJT-XWKH



▶ KJT-XWKI



▶ KJT-XWKJ



■ Product Overview

KJT1 Series Limit Switch is developed with German Technology, Using cast steel housing, with high temperature resistance and low (cold) resistance features. This series of products are suitable for AC 25 ~ 60HZ, voltage to 500V DC voltage to 440V control circuit or auxiliary circuit, as manipulator, control, limiting displacement, interlocking and other purposes.

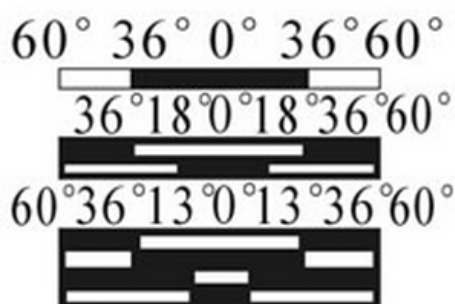
■ Operating Conditions

Ambient air temperature +120°C, no less than -30°C;

The elevation of the installation site shall not exceed 2000M;

Mechanical life: 5×10^5 times, Electrical life 1A~380V AC 10×10^5 times.

Switch Angle contact Opening and Closing diagram



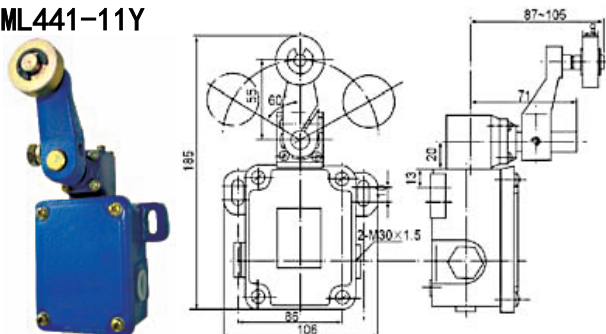
■ Main Technical Parameters

KJT1 Series Limit Switch and similar imported products parameters are shown below in Table .1

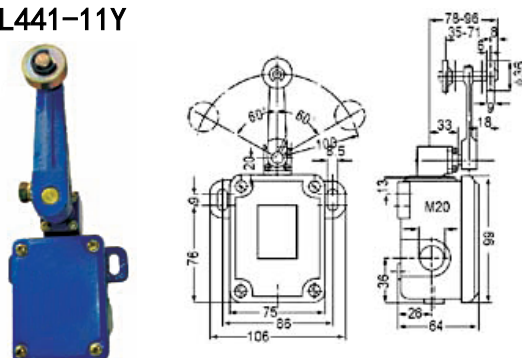
Basic Parameters	KJT1 Series Limit Switch	German Model S1 Series Limit Switch
Rated insulation voltage	500V	500V
Rated frequency	25-60Hz	25-60Hz
Rated heating circuit	16A	16A
Rated working voltage	380V~	380V~
Rated working current	4A	4A

■ Appearance

▶ KJT1-21H/B ML441-11Y

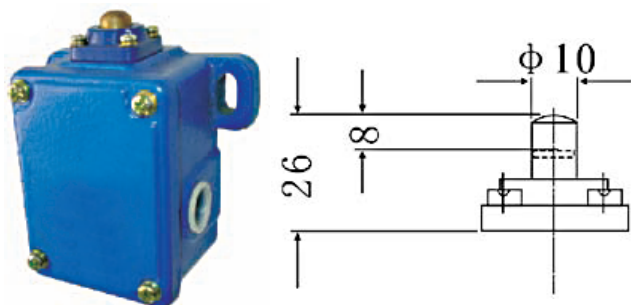


▶ KJT1-21H/D ML441-11Y

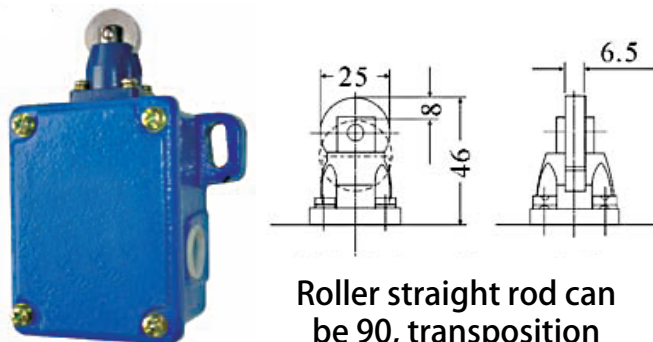


■ Appearance

▶ KJT1-21H/S
MS441-11Y

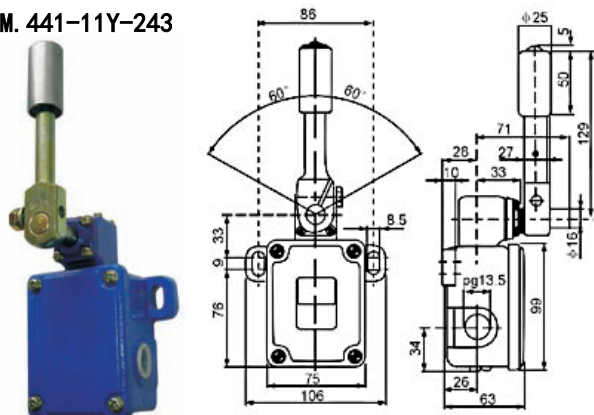


▶ KJT1-21H/R
MR441-11Y

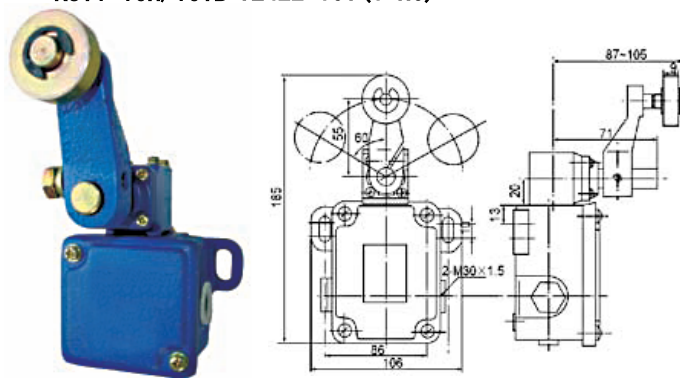


Roller straight rod can be 90, transposition

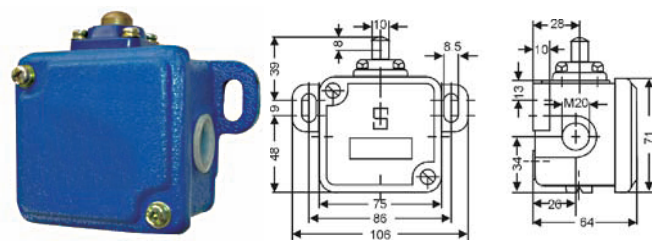
▶ KJT1-21H/M
M. 441-11Y-243



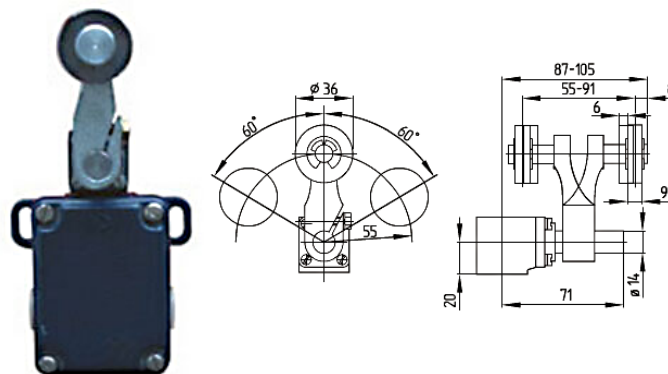
▶ KJT1-10H/01YB TL422-01Y (1 NC)
KJT1-10H/10YB TL422-10Y (1 NC)



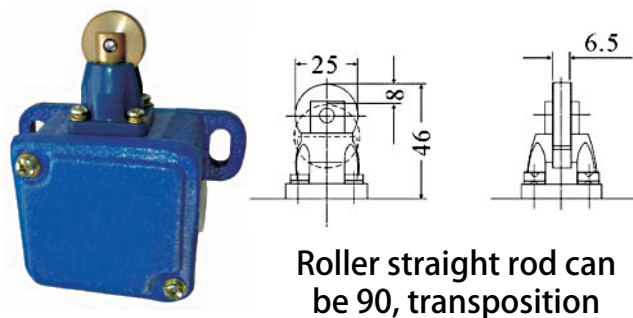
▶ KJT1-10H/01YSTS422-01Y (1 NC)
KJT1-10H/10YSTS422-10Y (1 NC)



▶ KJT1-10H/01YDTD422-01Y (1 NC)
KJT1-10H/10YDTD422-10Y (1 NC)

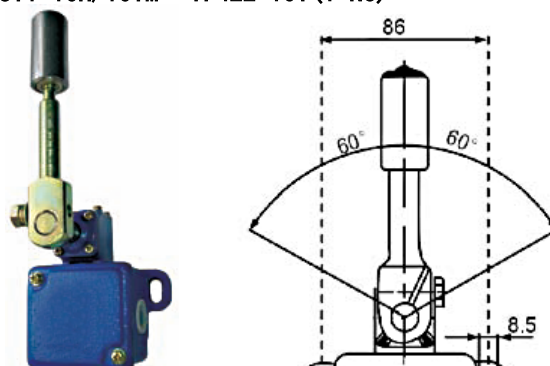


▶ KJT1-10H/01YR TR422-01Y (1 NC)
KJT1-10H/10YR TR422-10Y (1 NC)



Roller straight rod can be 90, transposition

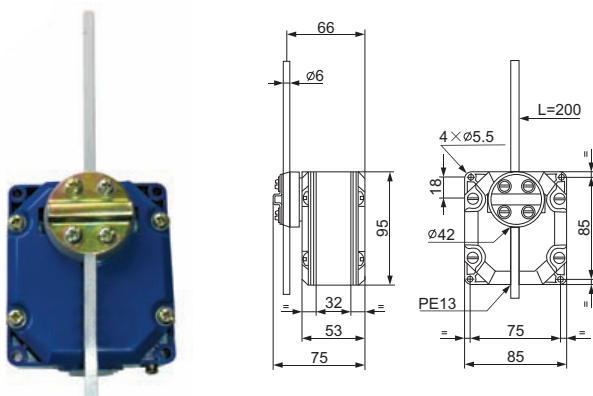
▶ KJT1-10H/01YM T. 422-01Y (1 NC)
KJT1-10H/10YM T. 422-10Y (1 NC)



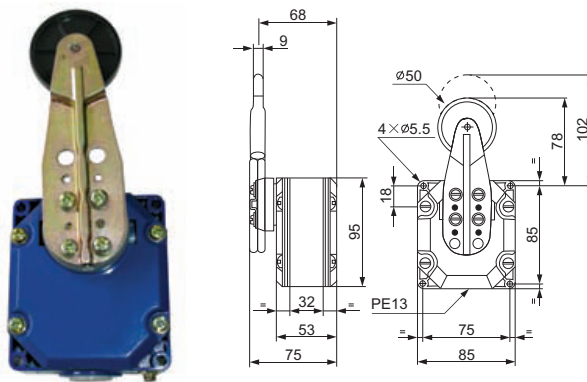
■ Product Overview

Suitable for AC-15,240V, 3A electric current control circuit, As Machine Tools, Mechanical Automatic Control, Limiting Movement, Driving Mechanism Action or Process Control can work in -25 °C + 60 °C Ambient Temperature. 90% Ambient Humidity; 2000 meters above sea level; In accordance with IEC/EN60947-5-1; VDE0660-200; GB14048.5-2001.

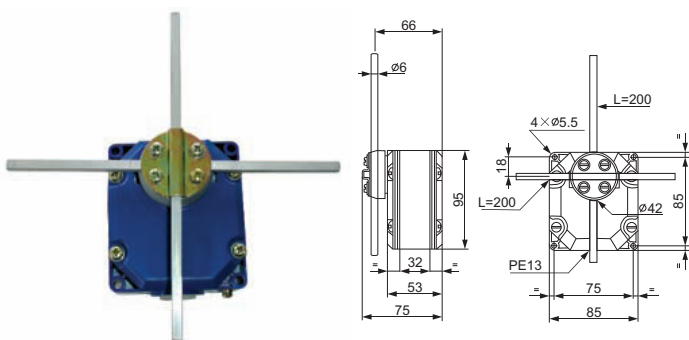
► Bar Rocker XCRA11(2) Limit Switch



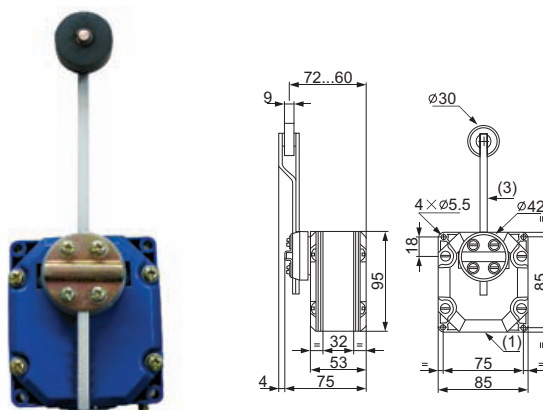
► Large Plastic Roller Rocker XCRA15 Limit Switch



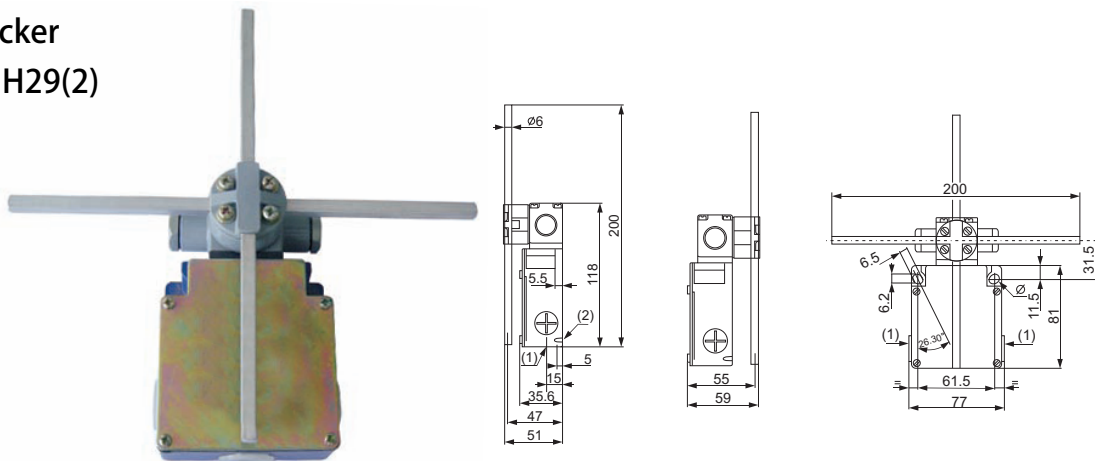
► Cross - Bar (T - shape) Rocker XCRE18(1) Limit Switch 90° XCRE18(2) Limit Switch 180°



► XCRA12 Limit Switch



► Cross Bar Rocker XCKMR54D1H29(2) Limit Switch



■ Product Overview

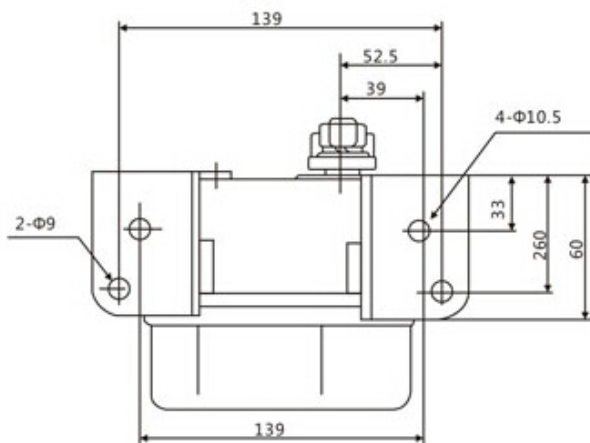
DQX-GL-□/□ Series Limit Switches AC 50Hz; Rated Working Voltage to 380V, DC Rated Working Voltage to 220V control circuit as Mobile Mechanical Translation Mechanism Limit Switch and Terminal Protection in line with GB140485-2001 standard

Usage Category	AC-12	AC-15		DC-13	
Rated working voltage	AC380	AC380	AC220	DC220	DC110
Rated working current	16	19	3.27	0.31	0.63
Rated heating current	20	20		10	
Rated insulation voltage	500				
Protection grade	IP54				

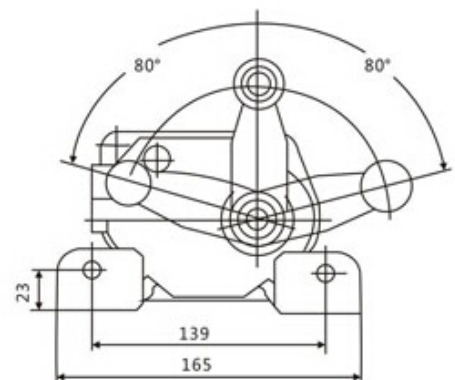
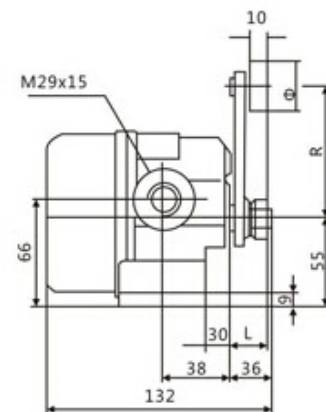


■ Working Principle

The CAM on the worm shaft rotates along with the worm shaft driven by the drum shaft. When the CAM rotates to a certain position, the flange part of the CAM comes into contact with the limit switch to make the limit switch move and cut off the Rising or Lowering power source so that the splay stops at the limit position. This product is equipped with four limit switches, which can be set by users according to their needs. Generally, two sets of protection can be set for Rising and Lowering, namely Alarm limit and Protection limit.



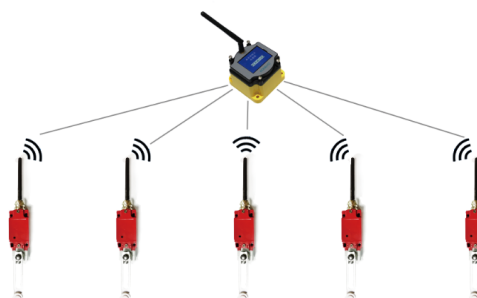
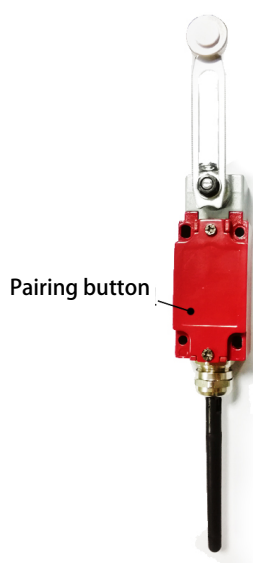
Model	L	R	Φ
DQX-5701-J	21	80	Φ30
DQX-5701-J	36	99	Φ35



■ Product Overview

This product is divided into two parts: Transmitting and Receiving. Transmitting and Receiving are Transmitted through 433M without wiring. The Transmitter uses a variety of power supply modes (3.7v lithium battery, 24v, 220v), and the Receiver is powered by 24v power supply. Multiple Transmitters can be paired with one Receiver or several for use. Pairing is simple and convenient. Customers can modify pairing output channels and replace spare parts at any time according to their own use.

■ Transmitter



This product is divided into two parts: Transmitting and Receiving. Transmitting and Receiving are Transmitted through 433M without wiring. The Transmitter uses a variety of power supply modes (3.7v lithium battery, 24v, 220v), and the Receiver is powered by 24v power supply. Multiple Transmitters can be paired with one Receiver or several for use. Pairing is simple and convenient. Customers can modify pairing output channels and replace spare parts at any time according to their own use.

Technical parameters

Transmission power	100 mW EIRP (20 DBM)
Launch distance	200m (visual)
Communication frequency band	443M
Life Span	100,000 times
Working temperature	- 25 °C ~ + 70 °C
Working humidity	Relative Temperature 90% (no condensation)
Protection grade	IP65
Power supply mode	Battery powered, power powered

Integrated Wireless Limit Switch

■ Reciever

Smart Wireless Receiver for Receiving data from the Transmeter, 1 Reciever switch can take up to five groups of Transmitting switch signals, Equipped with matching button, LCD display, can choose or modify the corresponding output channel issued after matching, matching instruction with the wireless limit switch Receives the signal corresponding to the output signal to relay or PC, PLC and other products.



Technical parameters

Transmission power	65 mw EIRP (18 DBM)
Launch distance	200m (visual)
Communication frequency band	433 m
Working temperature	- 25 °C ~ + 70 °C
Working humidity	Relative temperature 60% (no condensation)
Protection grade	Not waterproof
Power supply mode	24V power supply

Smart Wireless Reciever



Nanjing KJT Electric Co.,Ltd.

Address: Haoyue Science and Technology Park, No.1 FangYuanZhong Road,
JiangNing District, NanJingCity, JiangSu, China

Phone: 400-6366-987 Fax: 025-87168200

Postal Code: 210000

Website: www.kjt-china.com

Safety comes from Technology, Professionalism and Responsibility